

712H001023 | ESKDALE

LITE IT UP-P-RED-ET

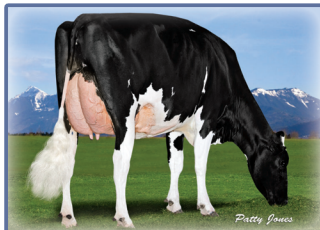
84000321429574 99%RHA-1 A1A2 BB
PC TC TL TD FREE OF ALL HAPLOTYPES IMPACTING FERTILITY



OWNED BY: **Don Averill Jr.**



DAM: MS AIJA MIRAND MANDY-ET VG-85



3rd Dam: WESTCOAST COMAND
WISCONSIN-ET VG-86 CAN

SIRE: VOGUE NIPIT-PP-ET

DAM: MS AIJA MIRAND MANDY-ET VG-85

Sired By: COOMBOONA ZIPIT MIRAND-IMP-ET

2ND DAM: AIJA KING-DOC WICHITA-ET VG-88 CAN

Sired By: WOODCREST KING DOC

3-08 2x 365d 36,532 4.1%F 1,488 3.3%P 1,221 CAN

3RD DAM: WESTCOAST COMAND WISCONSIN-ET VG-86 CAN

Sired By: LARCREST COMMANDER-ET

2-00 2x 300d 24,996 4.3%F 1,085 3.4%P 848 CAN

4TH DAM: VIEW-HOME DRMAN WSCONSIN-ET VG-88 CAN

Sired By: VAL-BISSON DOORMAN-ET

2-02 2x 365d 27,070 4.3%F 1,151 3.6%P 963 CAN

6TH-13TH Dams VG & EX

04/23 CDCB

GTP1®	+2610	78%R
Net Merit \$	+390	72%R

04/23 HAUSA

PTA Type	+3.22	78%R
Udder Composite	+2.64	
Feet & Leg Composite	+1.57	

			-3	-2	-1	1	2	3
Stature	3.33	Tall						
Strength	1.30	Strong						
Body Depth	1.88	Deep						
Dairy Form	2.30	Open						
Rump Angle	-0.56	HighPins						
Rump Width	2.15	Wide						
Rear Legs-Side View	0.50	Curved						
Rear Legs-Rear View	1.80	Straight						
Foot Angle	2.02	Steep						
Feet & Legs Score	2.27	High						
Fore Udder Attachment	3.69	Strong						
Rear Udder Height	3.69	High						
Rear Udder Width	3.23	Wide						
Udder Cleft	1.67	Strong						
Udder Depth	3.56	Shallow						
Front Teat Placement	0.68	Close						
Rear Teat Placement	0.86	Close						
Teat Length	0.58	Long						

HEALTH & FERTILITY

Somatic Cell Score	2.96
Productive Life	2.0
Heifer Livability	0.5
Cow Livability	-1.4
Dtr Preg Rate	-0.9
Hfr Conception Rate	0.0
Cow Conception Rate	-0.8
Fertility Index	-0.9

CALVING TRAITS

Sire Calving Ease	3.1%
Daughter Calving Ease	3.1%
Sire Stillbirth	7.1%
Daughter Stillbirth	5.2%
Gestation Length	0.5
Early First Calving	-1.6

PRODUCTION Dtrs: 0 | Herds: 0

Milk	463	79%R
Fat (lbs/%)	42	0.08%
Protein (lbs/%)	37	0.08%
Feed Efficiency	106	
Feed Saved	-215	
Cheese Merit \$	404	

"LITE IT UP is exactly what I like in breeding, a unique sire stack and he's a true outlier for type. He's also a balanced bull, red and polled."

— Don Averill Jr., Tillamook, OR